

EMERALD

PROGRESS

R E P O R T

OVERVIEW

01.ABOUTUS

02.OBJECTIVES

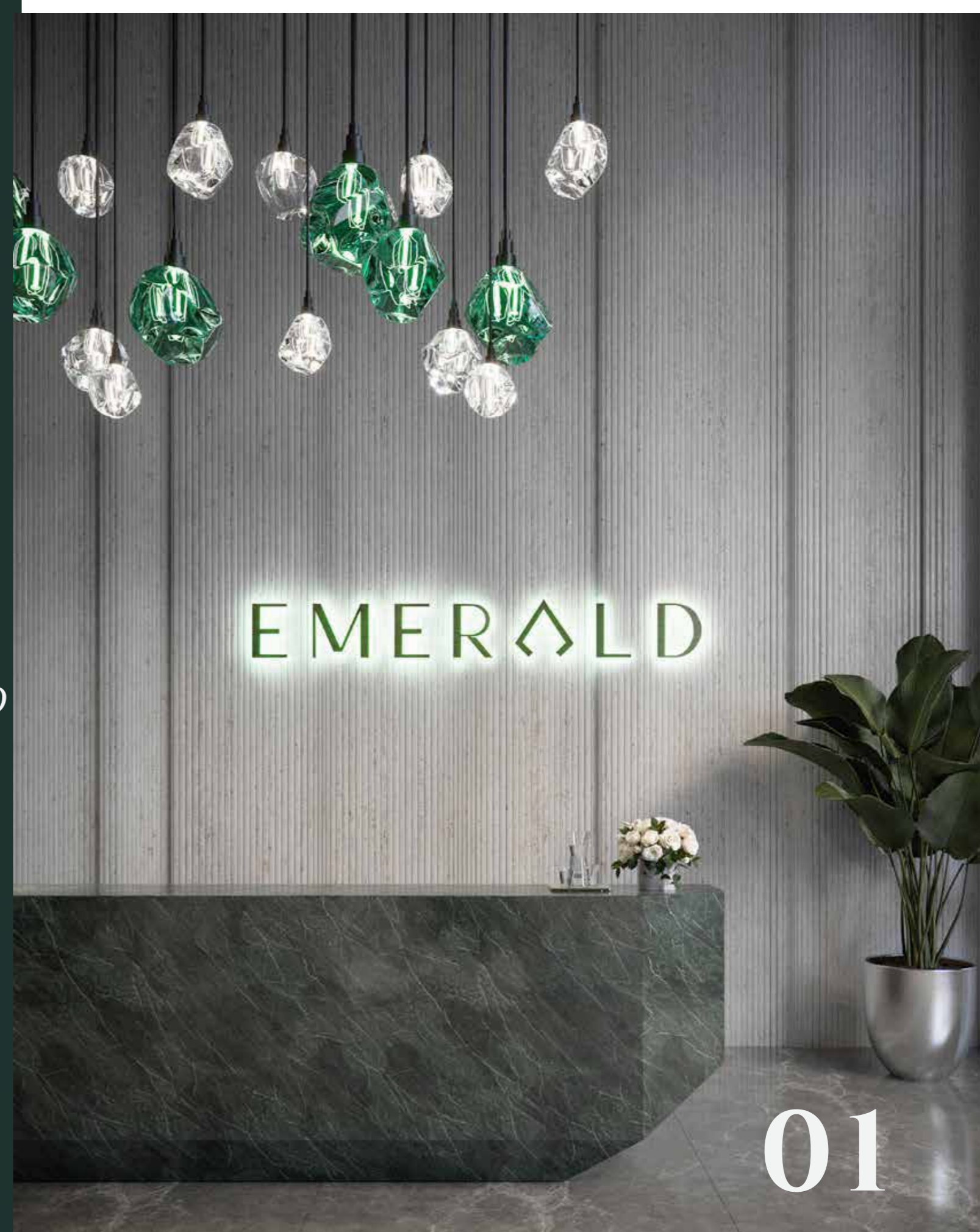
03.PROGRESSTIMELINE

04.CONSTRUCTIONPROGRESS

05.SHOW HOUSE

06.GALLERY

Emerald Springs is a luxury residential development in the heart of **Westlands, Nairobi**, offering a collection of 1 *and* 2 *bedroom apartments* designed to deliver an unmatched urban living experience. Set across 0.7 acres, the development comprises of **two blocks**, 29 floors with total of 450 Units. With **panoramic view** of *Karura Forest, Nairobi CBD Waiyaki Way, and The Expressway*, Emerald Springs redefines, luxury, convenience, and smart investment in one of Nairobi's most sought-after locations.



OBJECTIVES

CONSTRUCTION PROGRESS

Emerald Springs is committed to keeping investors and buyers informed at every stage.

This report provides a detailed update on completed and upcoming construction phases, ensuring transparency and confidence in our timeline

INVESTMENT CONFIDENCE

With meticulous attention to structural integrity, premium finishes, and smart technology integration, this update highlights why Emerald Springs is set to be one of Nairobi's premier real estate investment

DEVELOPMENT MILESTONE

As we progress in 2025, this report outlines the next key construction phases, giving buyers a clear picture of when they can expect key milestones to be complete

PROGRESS TIMELINE



JUNE 2024

Land Clearing ,excavation and foundation set up finalized



OCTOBER 2024

Piling,concrecte pouring and underground parking completed



DECEMBER 2025

Structural reinforcement and initia apartment framework commenced for Block B



JANUARY 2025

Ground floor level completed on **Block B**, apartment levels progressing.
Block A now moving toward superstructure development



MARCH 2025

An Exclusive Launch of one bedroom and two bedroom show house.



JUNE 2025

Block A casting 19th Floor (Unit layout) 24 floor apartment level.
Block B apartment level, 1st floor to 20th floor completed, form work and steel fixing in progress



Structural works for both Block A and Block B have been successfully completed.

AUG 2025

CONSTRUCTION PROGRESS

BLOCK A

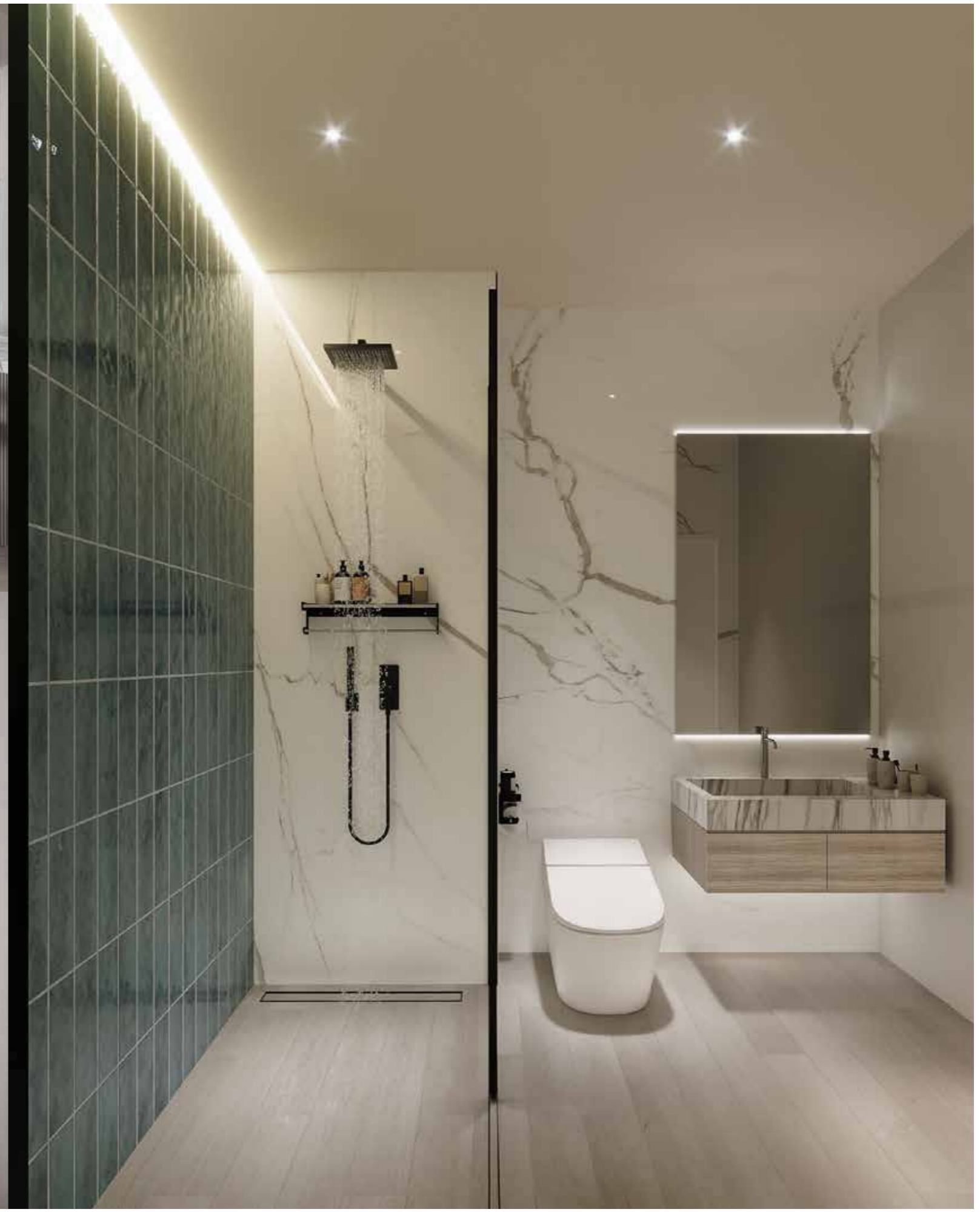
- Basement level -completed
- Parking Levels- completed
- Ground floor level-completed
- Plaster works complete
- Stone building complete.
- Rooftop water tanks and lift areas construction complete

BLOCK B

- Basement level -completed
- Parking Levels Completed
- Plaster works complete
- Stone building complete.
- Rooftop water tanks and lift areas construction complete

ONGOING CONSTRUCTION

- Painting Exterior
- Electrical works
- Tiling works
- Plumbing work
- Fittings & ceiling
- Windows Framing
- Landscaping





SHOW HOUSE

05



Painting work,Electrical,and
Ceiling work have commenced

SEP 2025

FUTURE CONSTRUCTION

PAINTING & WALL FINISHES

- Windows & Doors Installation
- Lift Installation & Testing
- Final Flooring & Skirting
- External Works (landscaping, paving, drainage)
- Final Touches & Snagging (last checks before handover)





LIVING ROOM TILING



BATHROOM TILING



KITCHEN TILING

GALLERY





GYP SUM INST ALLATION

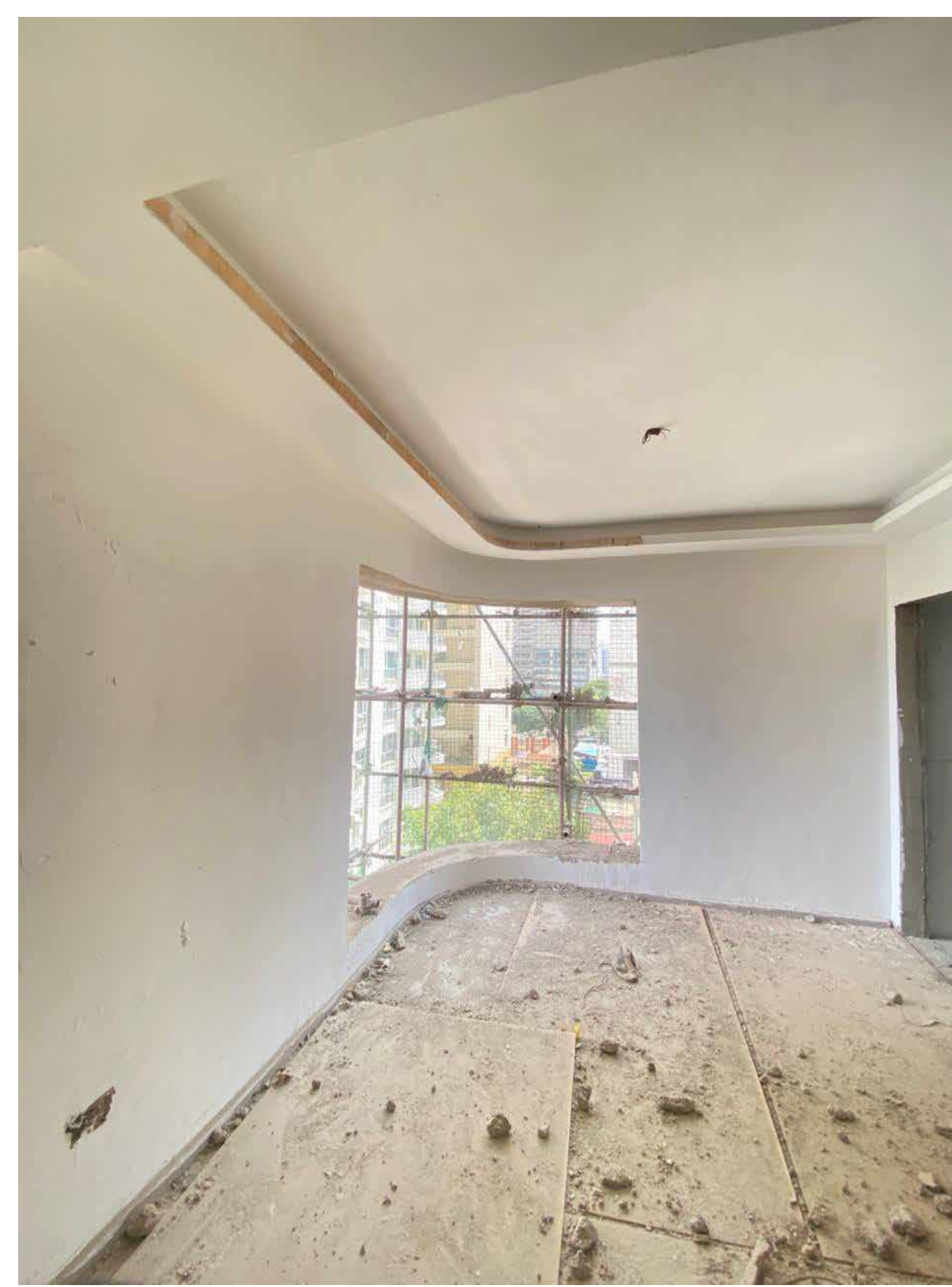




OCT 2025

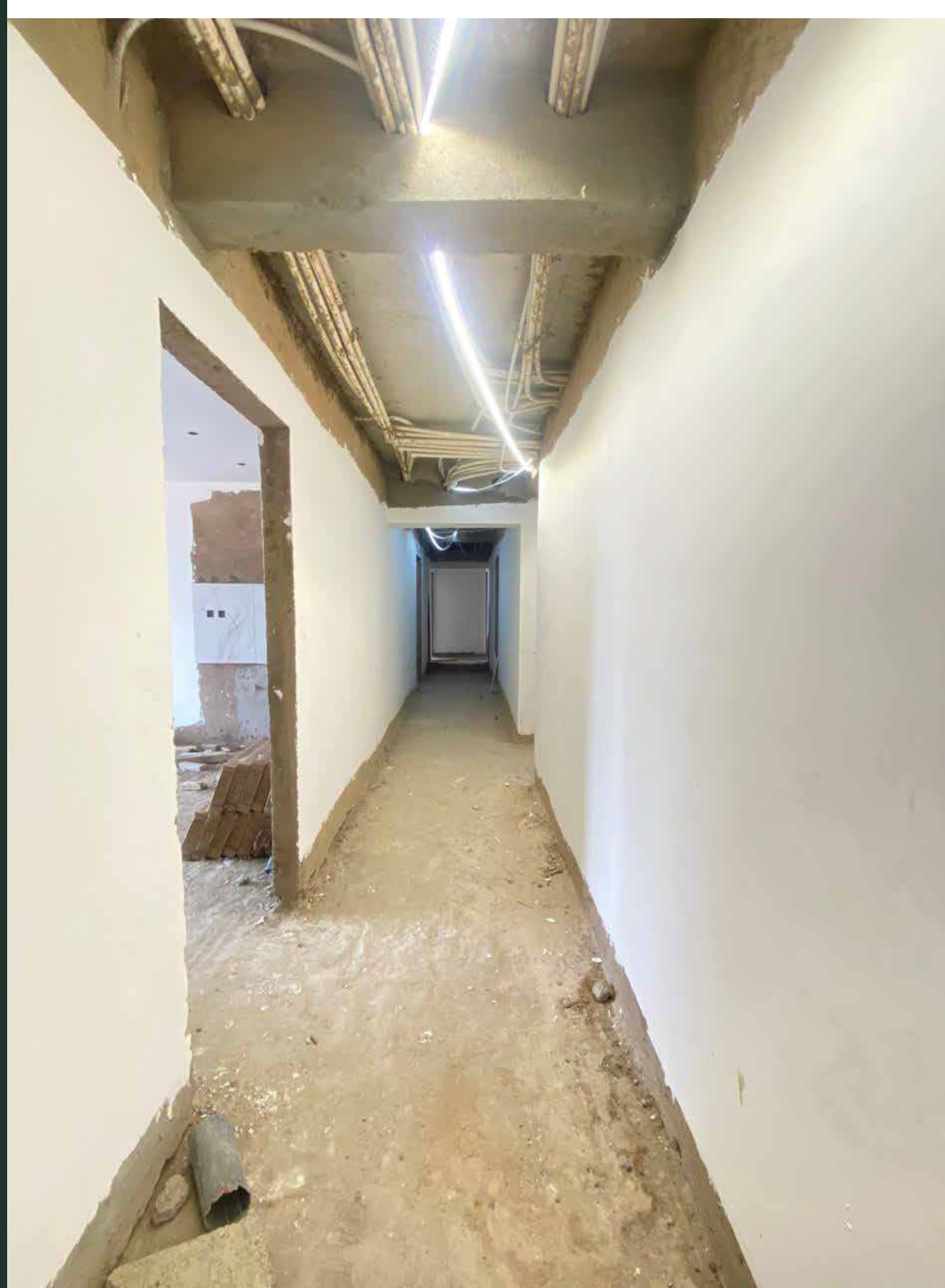
KEY HIGHLIGHTS

- Waterproofing works completed
- External paint for Block A & B completed on 20th–25th floors
- Interior paint completed on 24th–25th floors
- Tiling works completed on 20th–25th floors



INTERIOR

PASSAGE





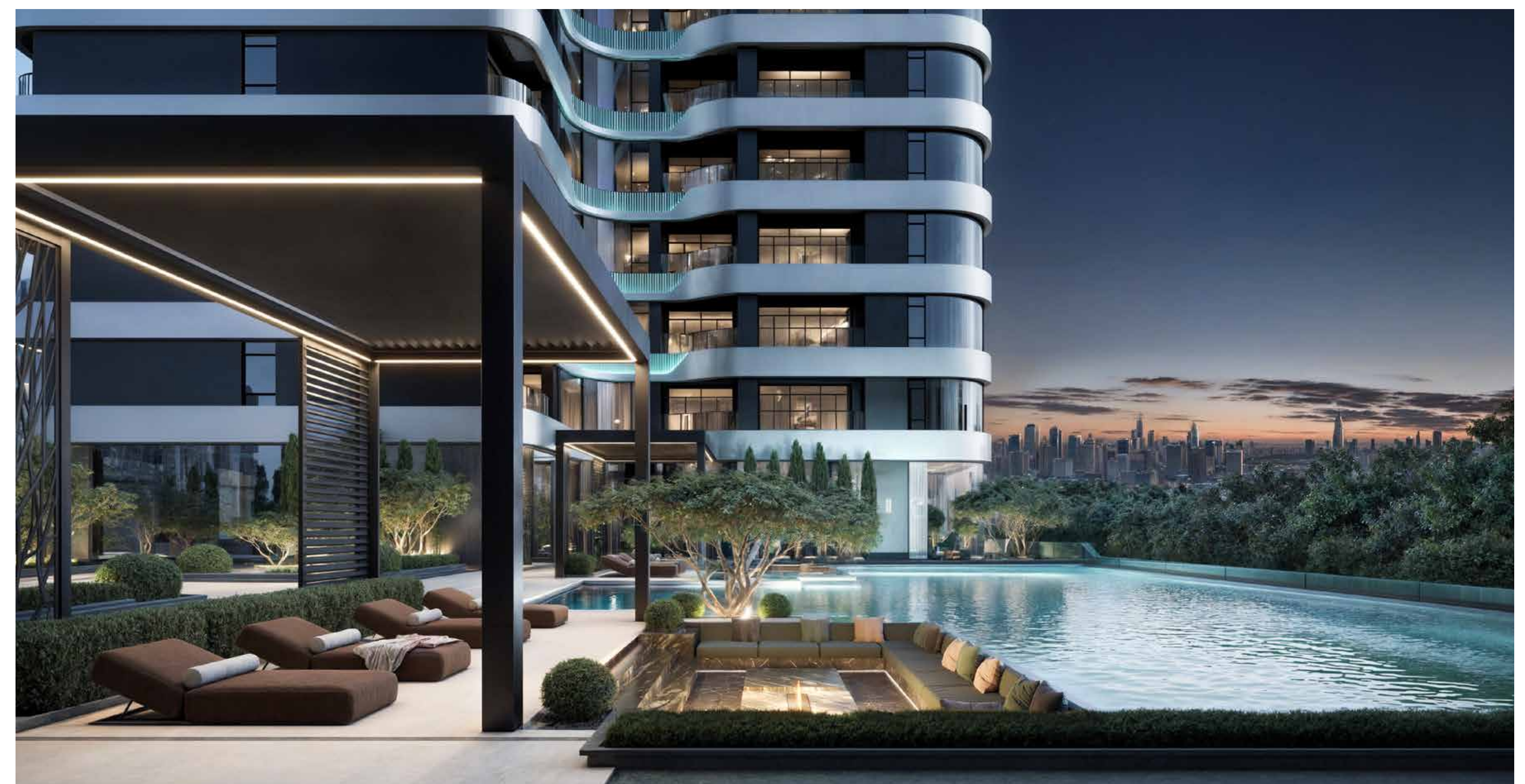
EXTERIOR





CEILING INSTALLATION







DEC 2025



WINDOW FITTINGS

KEY HIGHLIGHT DEC 2025

Ceiling works are progressing steadily, currently standing at 25–20% completion as the team finalizes structural alignment and prepares for the next phase.

Tiling works have advanced to the 25–10 Floor, with the team carefully setting out patterns and ensuring precision for a high-quality finish.

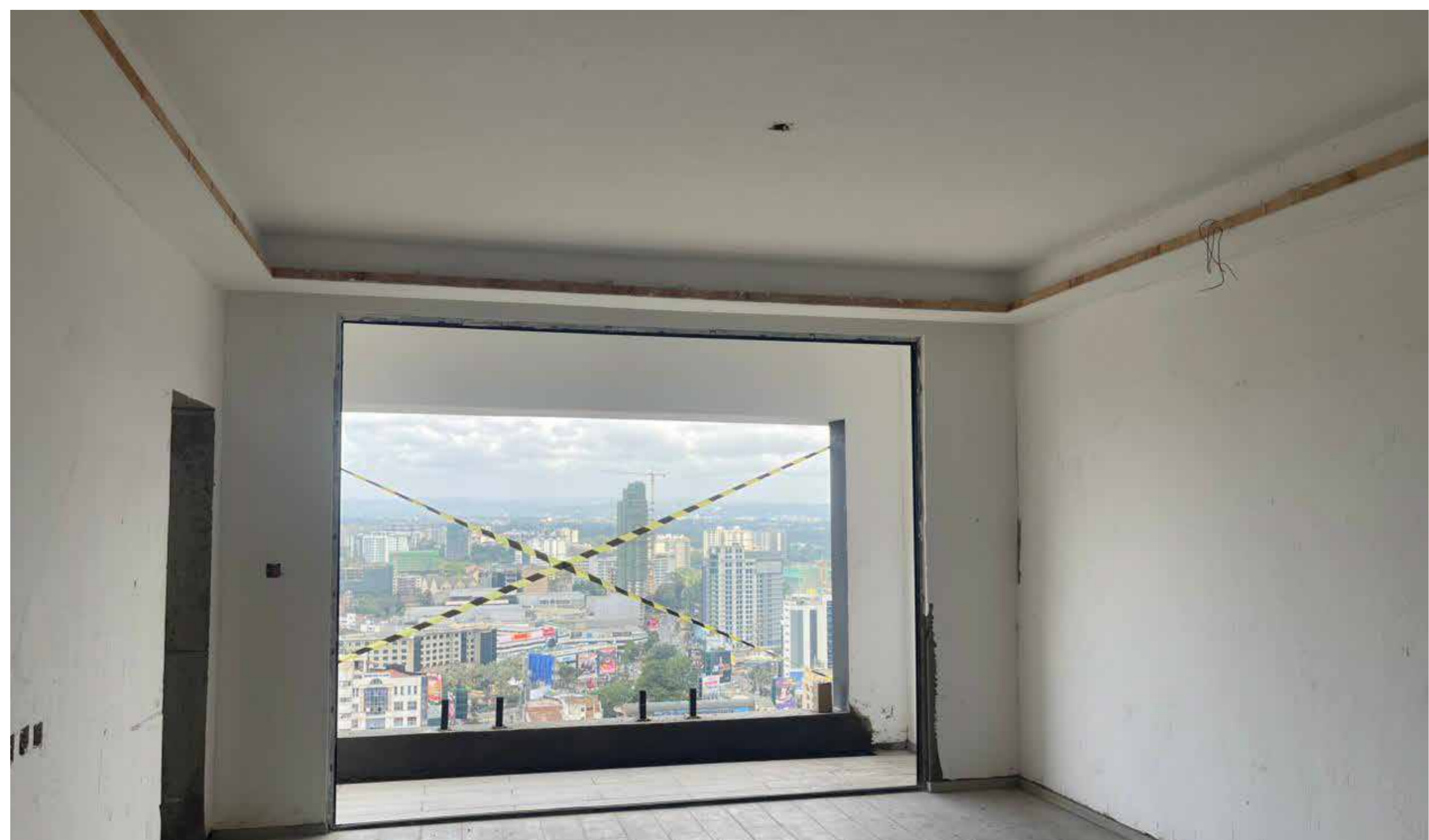
Landscaping activities are actively underway, with groundwork preparation, leveling, and early planting forming part of the ongoing improvements.

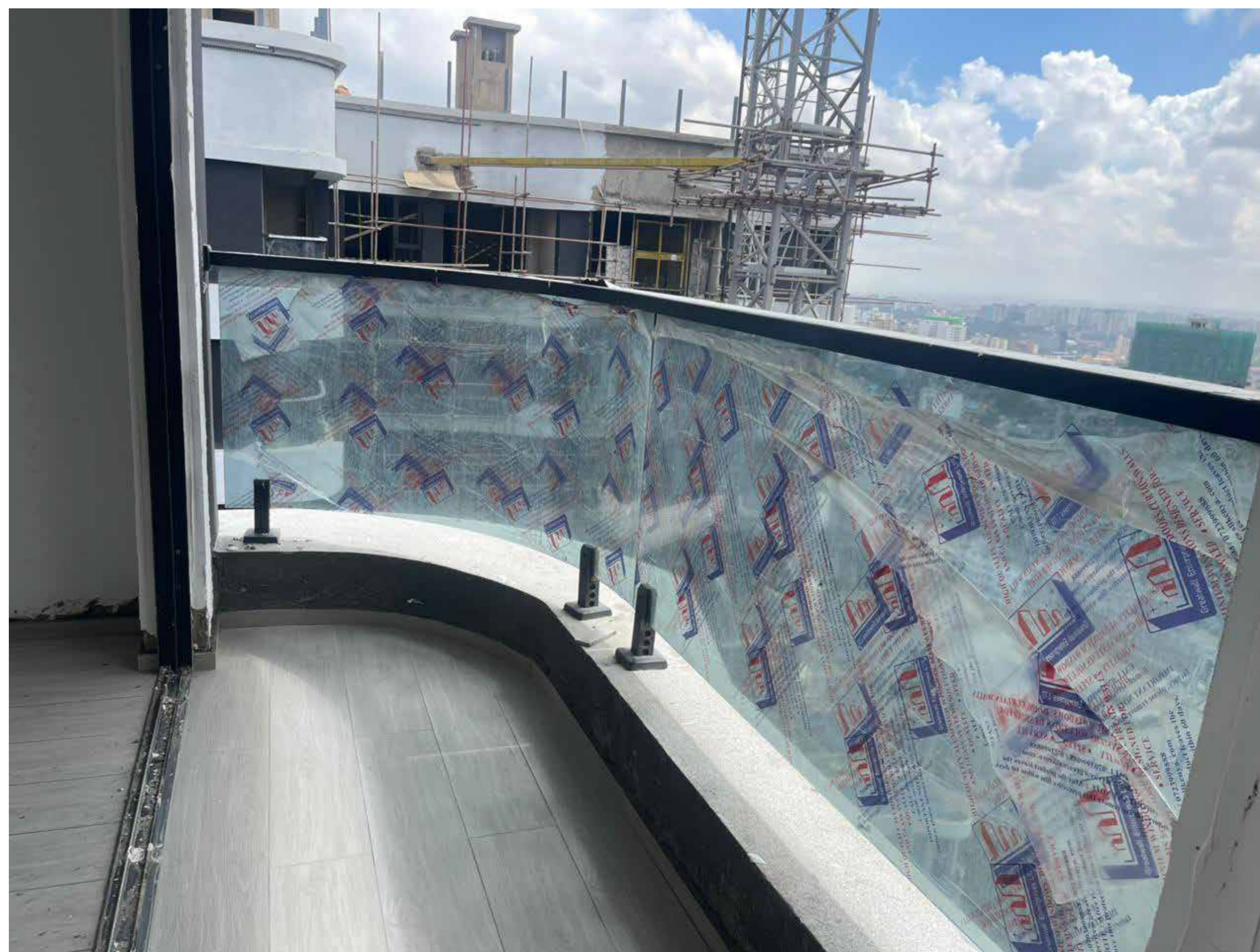
The first coat of paint has reached 25–15 floor completion, marking significant progress as surfaces are being primed and coated for a smooth final finish.

Window fittings are moving forward well at 25–20 floor, with installation teams ensuring proper alignment, sealing, and quality control throughout the process.



INTERIORS





BALCONY



BALCONY



FEB 2026



ROOFTOP GARDEN



WATER STORAGE TANK



WINDOW INSTALLATION

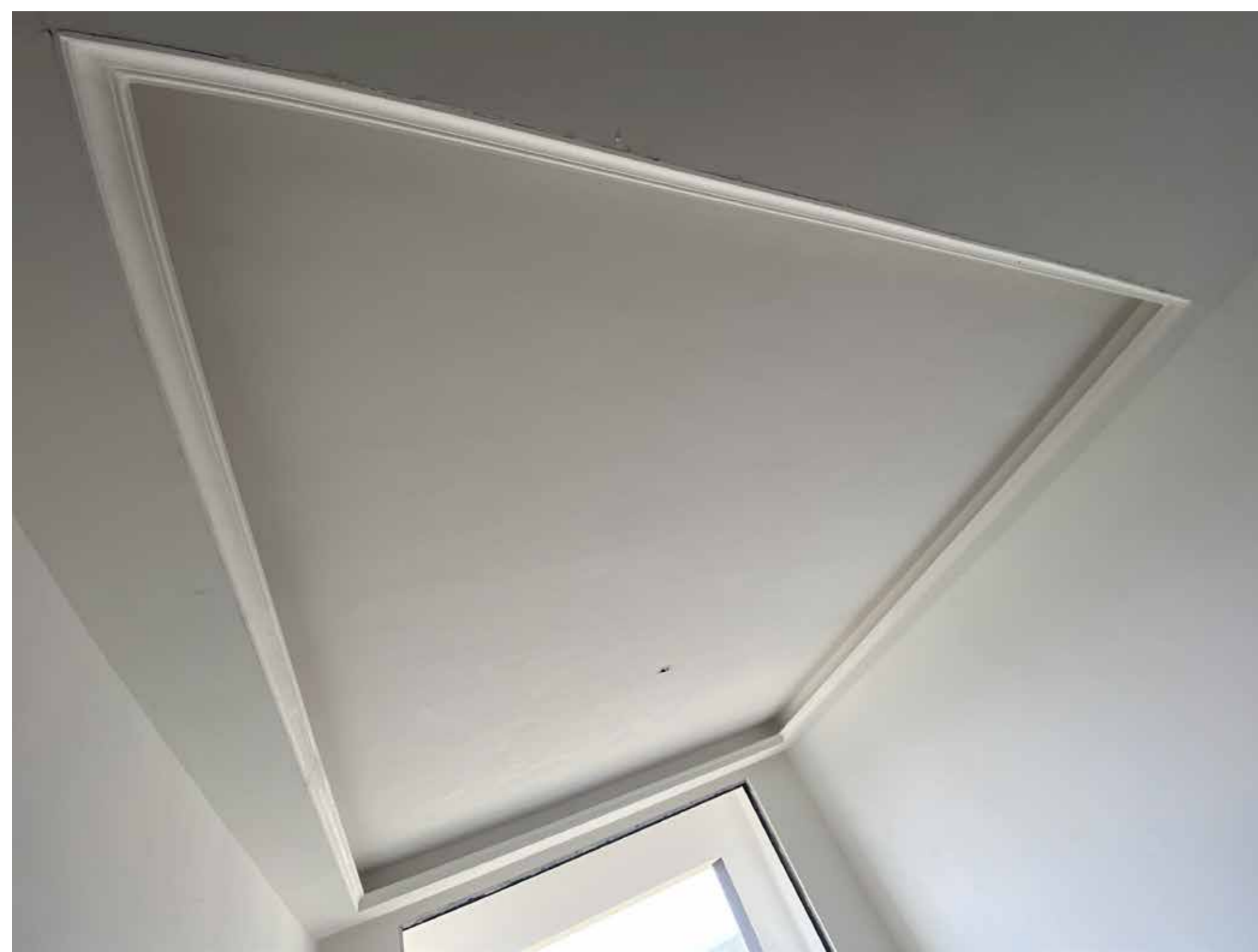
Window fittings are ongoing up to the 15th–25th floors,
with detailed quality checks at every stage.

BALCONY



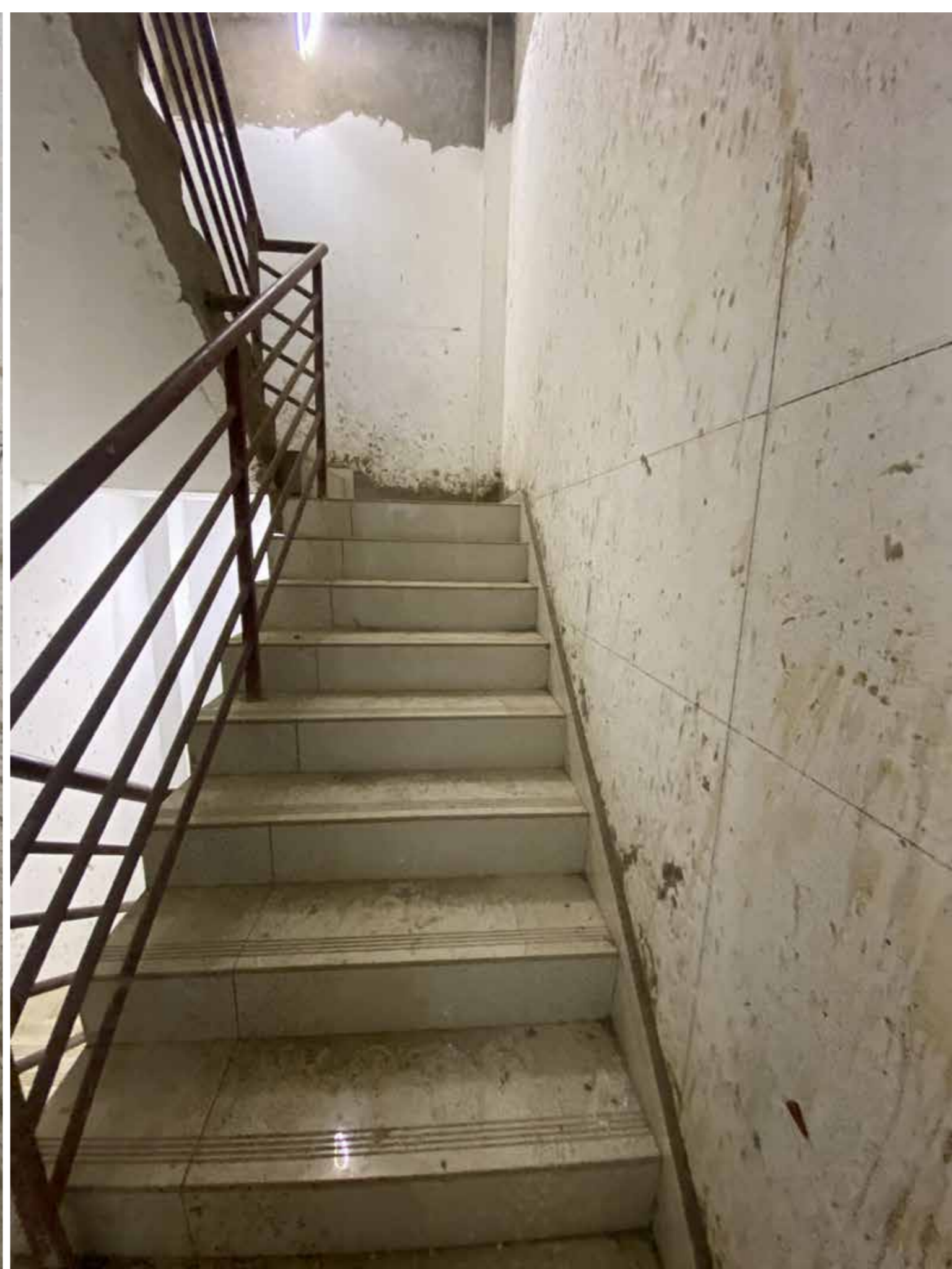
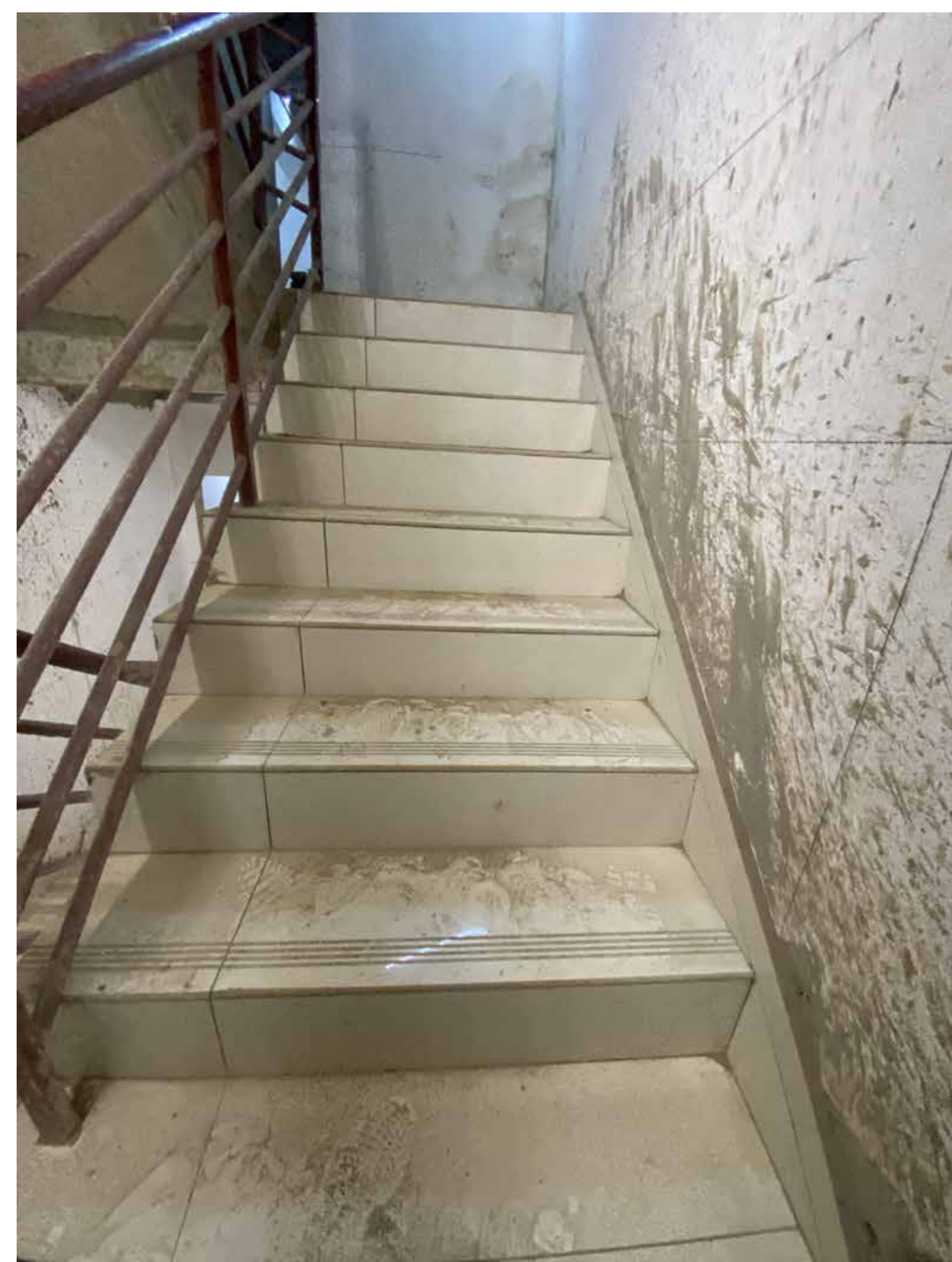
WIDOWS





CEILING WORKS

Ceiling installation is currently 20–25% complete. Structural alignment is being finalized in preparation for the next phase.



STAIRCASES

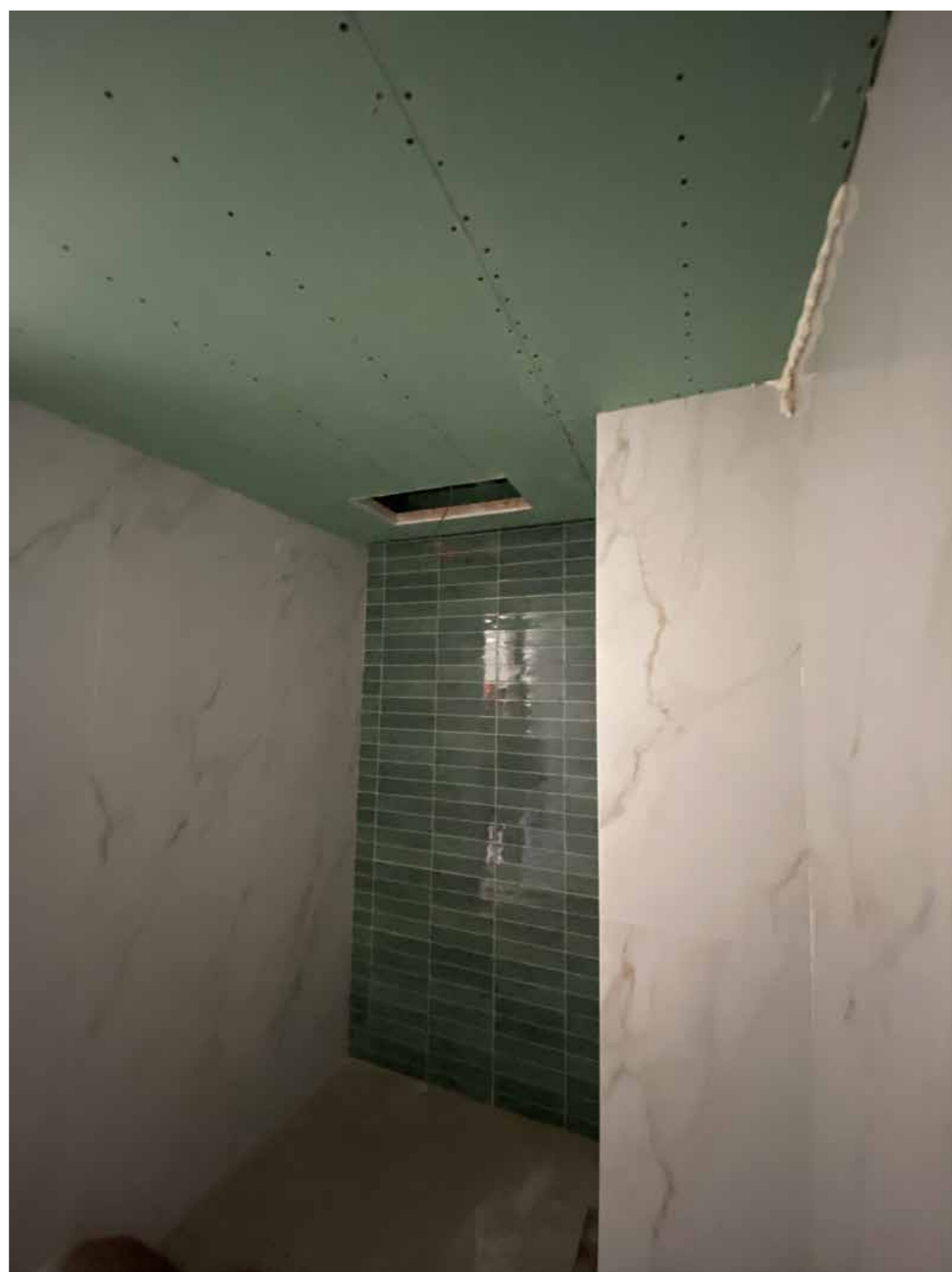


METRE BOXES



CORRIDOR CEILING





BATHROOMS

KEY HIGHLIGHT FEB 2026

WATER STORAGE TANK

- Rooftop water storage tank installation 80% completed.
- Structural support and positioning finalized.
- System ready for integration into the main supply network.
- Ensures reliable water distribution across both blocks.

ROOFTOP GARDEN

- Surface preparation and waterproofing finalized.
- Landscaping layout implementation underway.
- Designed to provide a premium recreational space with panoramic city views.

WINDOWS (EXTERNAL & INTERNAL VIEWS)

- Window installations progressing steadily across multiple floors.
- Frame alignment and glass fitting completed in key sections.
- Sealing works ongoing to enhance insulation and weather protection.
- Quality control inspections underway to ensure finishing standards.

CEILING BOARDS

- Ceiling board installation advancing across residential units.
- Framework alignment completed prior to boarding.
- Surfaces prepared for lighting fixtures and final finishing.
- Works progressing floor by floor in line with schedule.

STAIRCASES

- Staircase finishing works ongoing.
- Surface smoothing and structural detailing completed.
- Final finishing preparations in progress.

METER BOXES

- Meter box installations underway.
 - Electrical routing and positioning aligned.
 - Systems being prepared for final utility connections.
 - Compliance and safety checks ongoing.
-

CORRIDOR CEILINGS

- Corridor ceiling installations progressing steadily.
 - Lighting integration points completed.
 - Uniform alignment ensuring clean architectural finish.
 - Preparation for painting and final detailing phase.
-

BATHROOMS

- Bathroom tiling works progressing across completed floors.
- Plumbing and waterproofing works finalized in key sections.
- Sanitary fittings installation ongoing.
- Final quality inspections to follow before handover phase.



GY GROUP
REAL ESTATE

EMERALD

S P R I N G S

A NEW BEGINNING